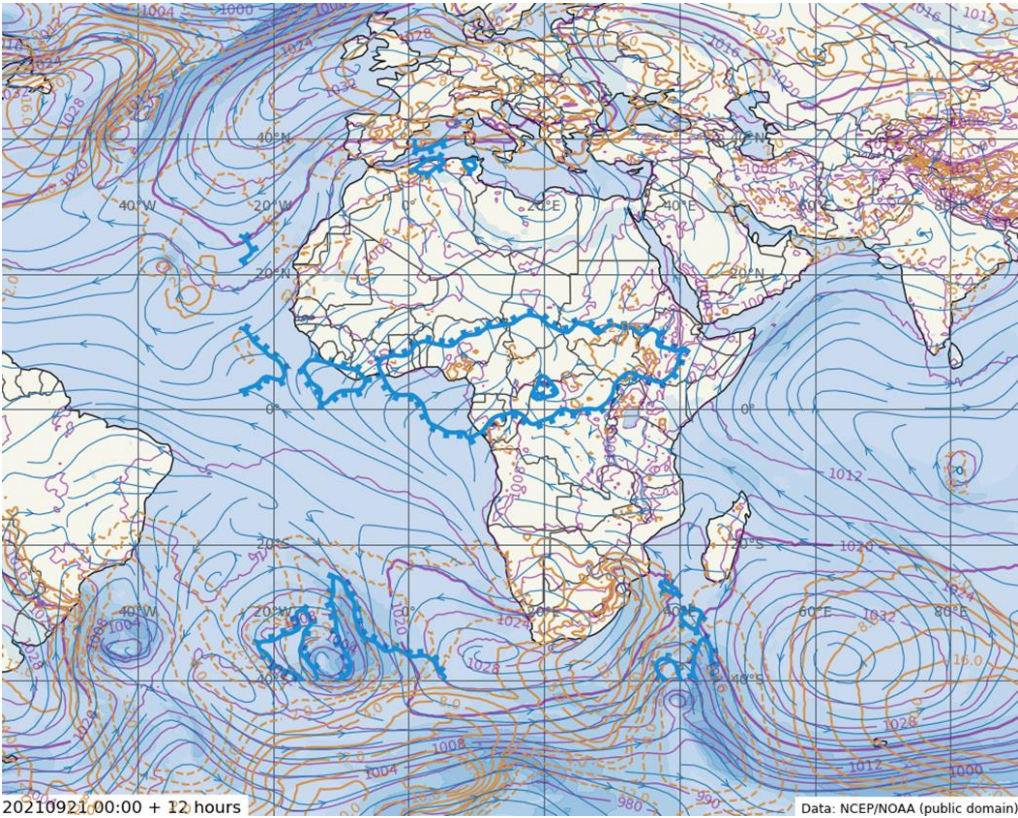


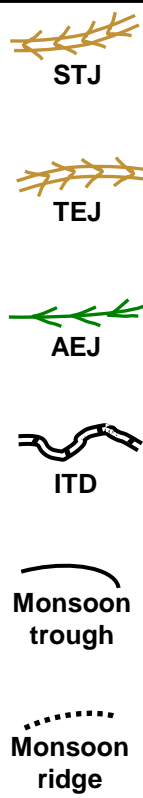
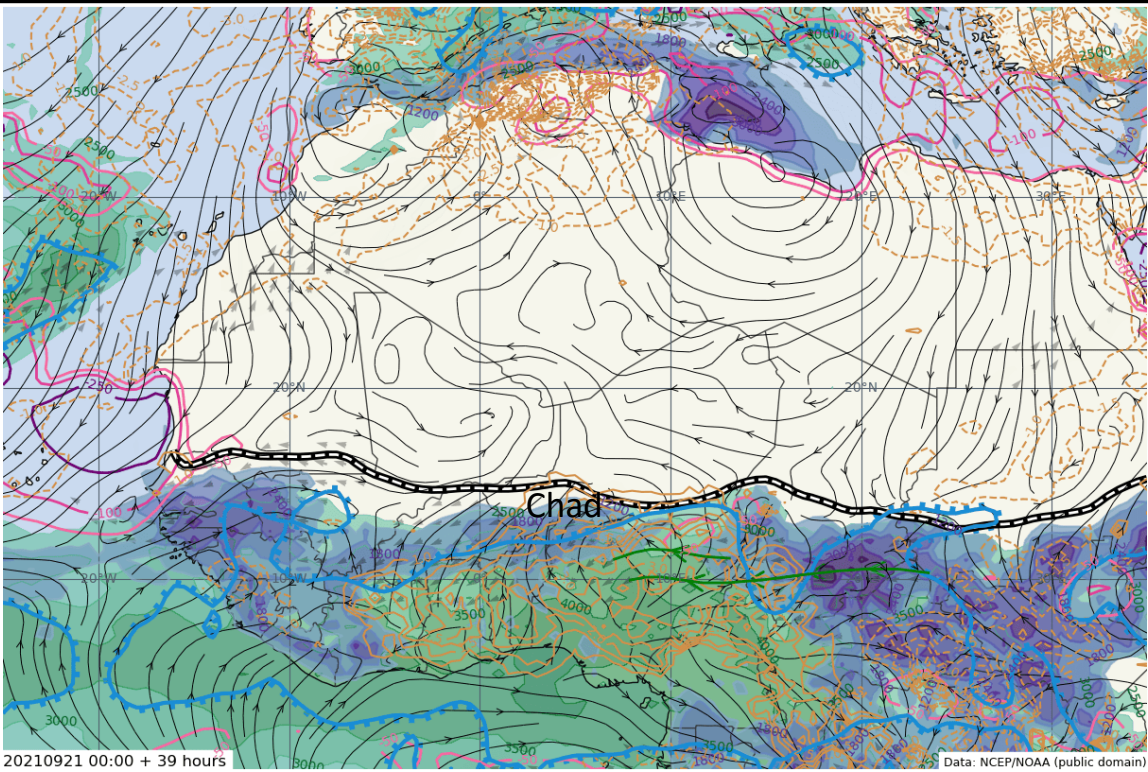


# Synoptic weather Forecast sheet - ACMAD

2021 09 21 0600 UTC



Region	24 hr Regional Synoptic Summary
Africa	<p>Azores high is expected to intensify (1032hPa – 1036hPa), ridging over coast of Mauritania, Senegal up to northern Guinea Conakry.</p> <p>St Helena high center is expected to weaken from 1028hPa to 1024hPa sitting over the tip of Africa extending its ridge over east Africa region pushing the meridional arm of ITCZ northward .</p> <p>Mascarene is intensifying from 1032-1036hPa, extending its ridge towards eastern Africa region</p> <p>Libyan high is weak, the ITD position will be quasi-stationary over the eastern parts of Sahel.</p> <p>The western part of the ITD will move southwards due to the Azores ridge.</p> <p>Deep moisture depth (3000 to 3600m) will be more concentrated over Central Africa</p> <p>Deep convections are expected over Nigeria, Cameroon and Central Africa.</p>
Date	
2021 09 21	
Forecast Time	
0000 + 12 hrs	
Data	
GFS synthetic analysis chart	



Region	24-72 hr Regional Synoptic Summary
West Africa	<p>Azores high is expected to be quasi-stationary (1028hPa) while weakening maintain its ridge over Morocco and Mauritania .</p> <p>St Helena high will shift eastward while remains quasi-stationary (1024hPa).</p> <p>The Libyan ridge will weaken over central and eastern Sahel.</p> <p>ITD is expected to move southwards over western region while remains quasi-stationary else where.</p> <p>Mascarene is expected to remain quasi-stationary while weakening from (1036hPa-1028hPa).</p> <p>Monsoon influx expected to be between (from 2500 to 4000m) being the highest near the coastal area and decrease as it moves in land.</p> <p>AEJ is expected over Senegal, S. Mali, S. Burkina Faso, S. Niger Chad and northern Cameroon associated with AEW and Vorticity.</p>
Date	
2021 09 21	
Forecast Time	
0000 +45 hours	
Data	
GFS synthetic analysis chart	







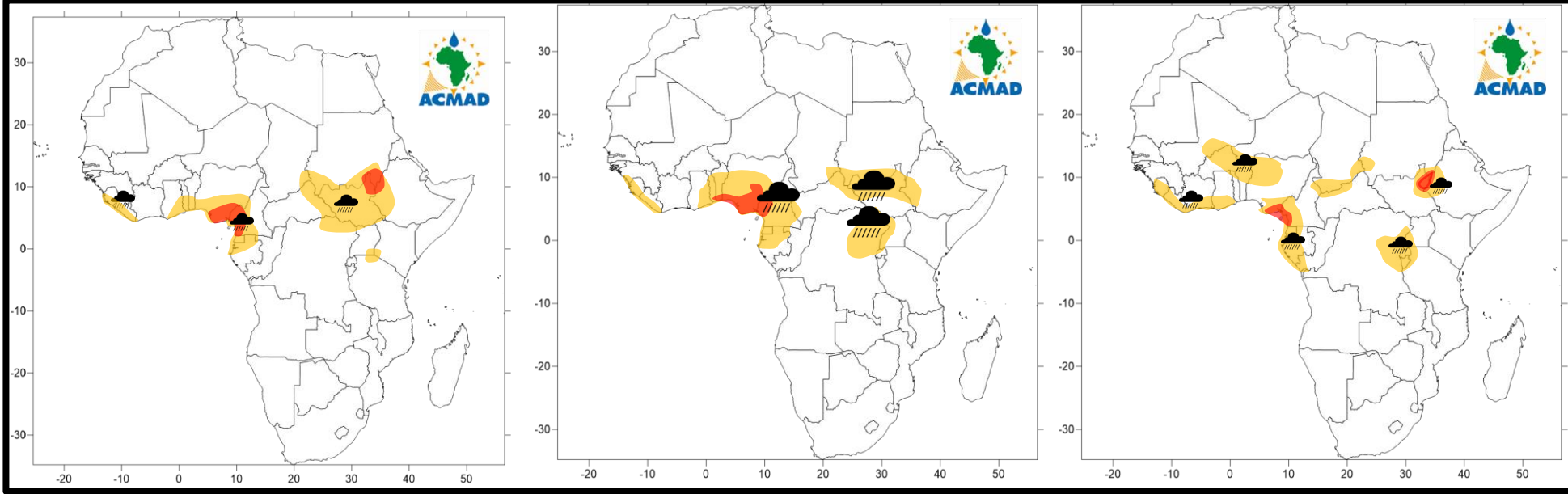
# High impact weather Forecast sheet - Africa

2021 09 21 1200 UTC

2021 -09-21

2021-09-22

2021-09-23



Region
Africa
Date
2021 09 20
Time
20-22/09/2021
Data
Forecast Risk
Be aware
Be Prepared
Take Action

Weather Forecasting Risk Table

Likelihood	Very high	E1	E2	E3	E4	E5
	High	D1	D2	D3	D4	D5
	Medium	C1	C2	C3	C4	C5
	Low	B1	B2	B3	B4	B5
	Very low	A1	A2	A3	A4	A5
		Very low	Low	Medium	High	Very High
Impact						

Take Action
Be Prepared
Be aware
Low risk

Weather Icons			
Rain	Wind	Dust	Hail

Which ensemble products have been used to determine the likelihood and forecast? ECWMF ☐ UKMO ☐ BOTH ☒

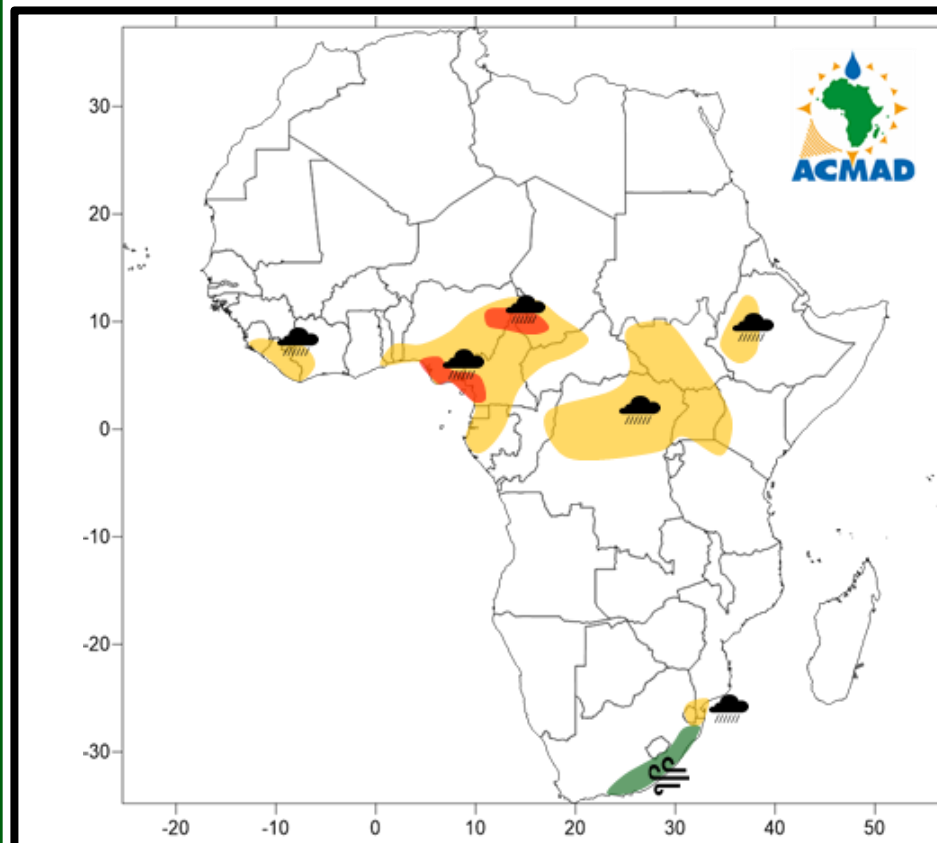
Regions	12-15hrs	15-18 hrs	18-21 hrs	21-24 hrs
Diffa				
Zinder				
Maradi				
Tahoua				
Dosso Niamey Tillaberi				

Summary of 12-24 hour forecast

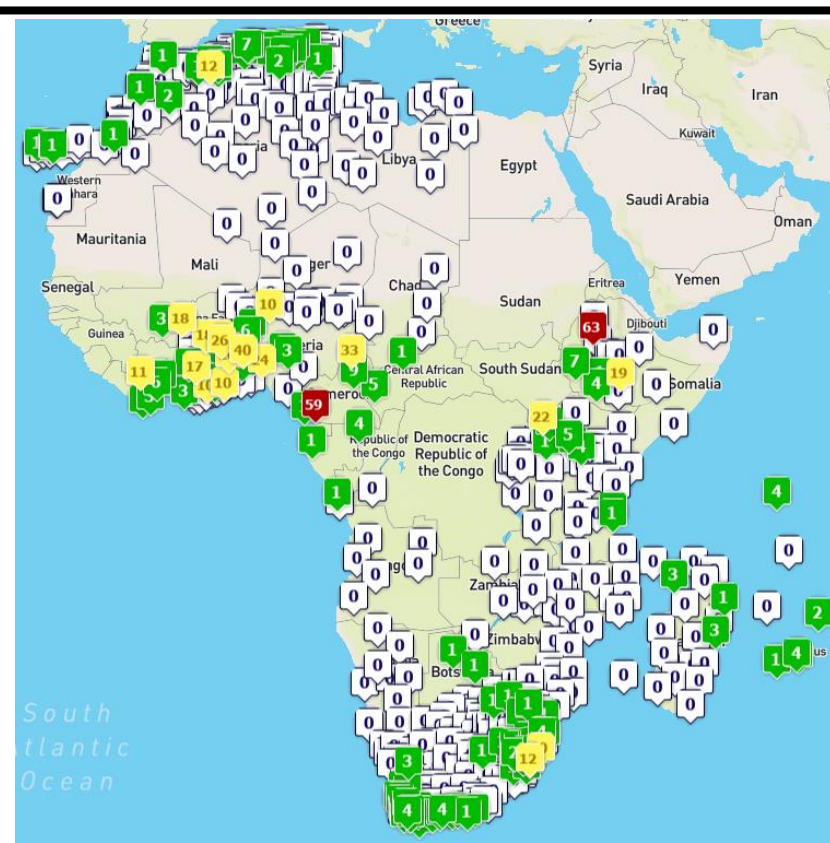
A system currently located over Air shows signs of intensifying to produce some heavy rains over Agadez and its environs.



Forecast issued on 2021 09 20



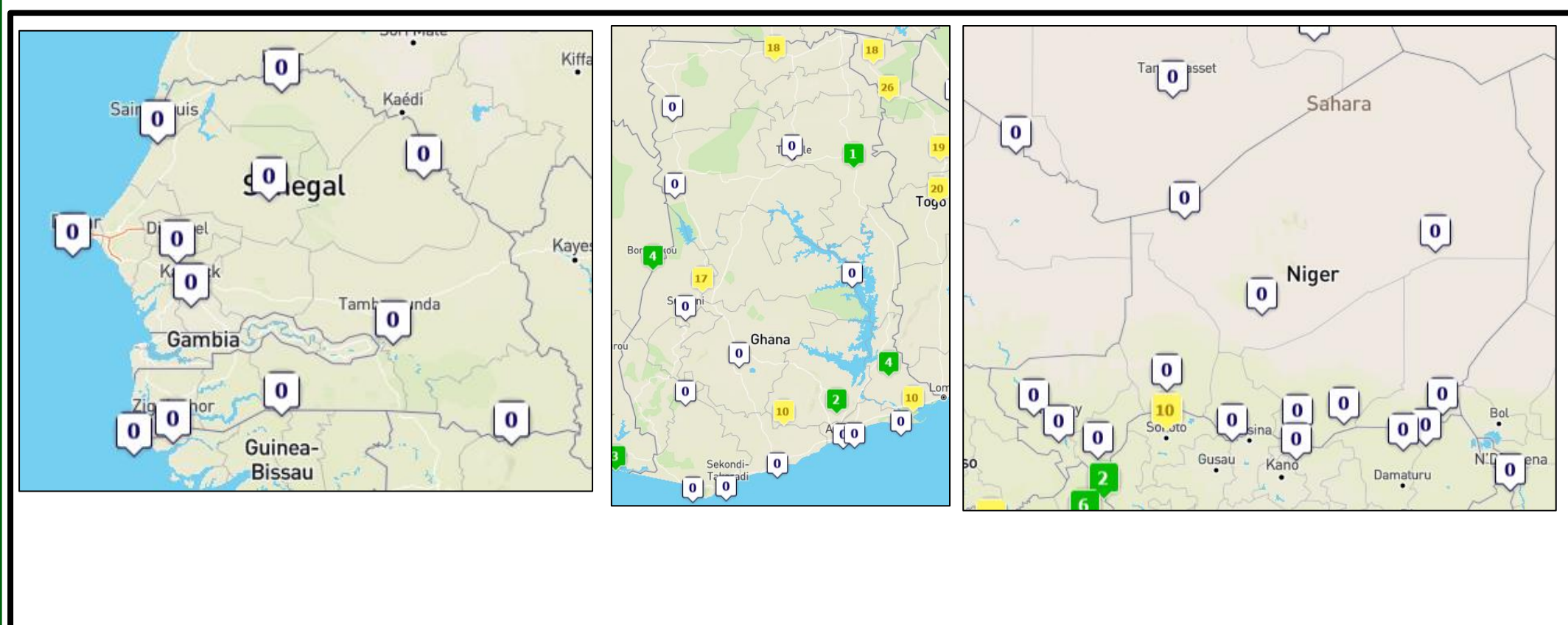
2021 09 20 24H rain gauge observation



Data: Reports from GTS on 2021 09 20 at 06UTC

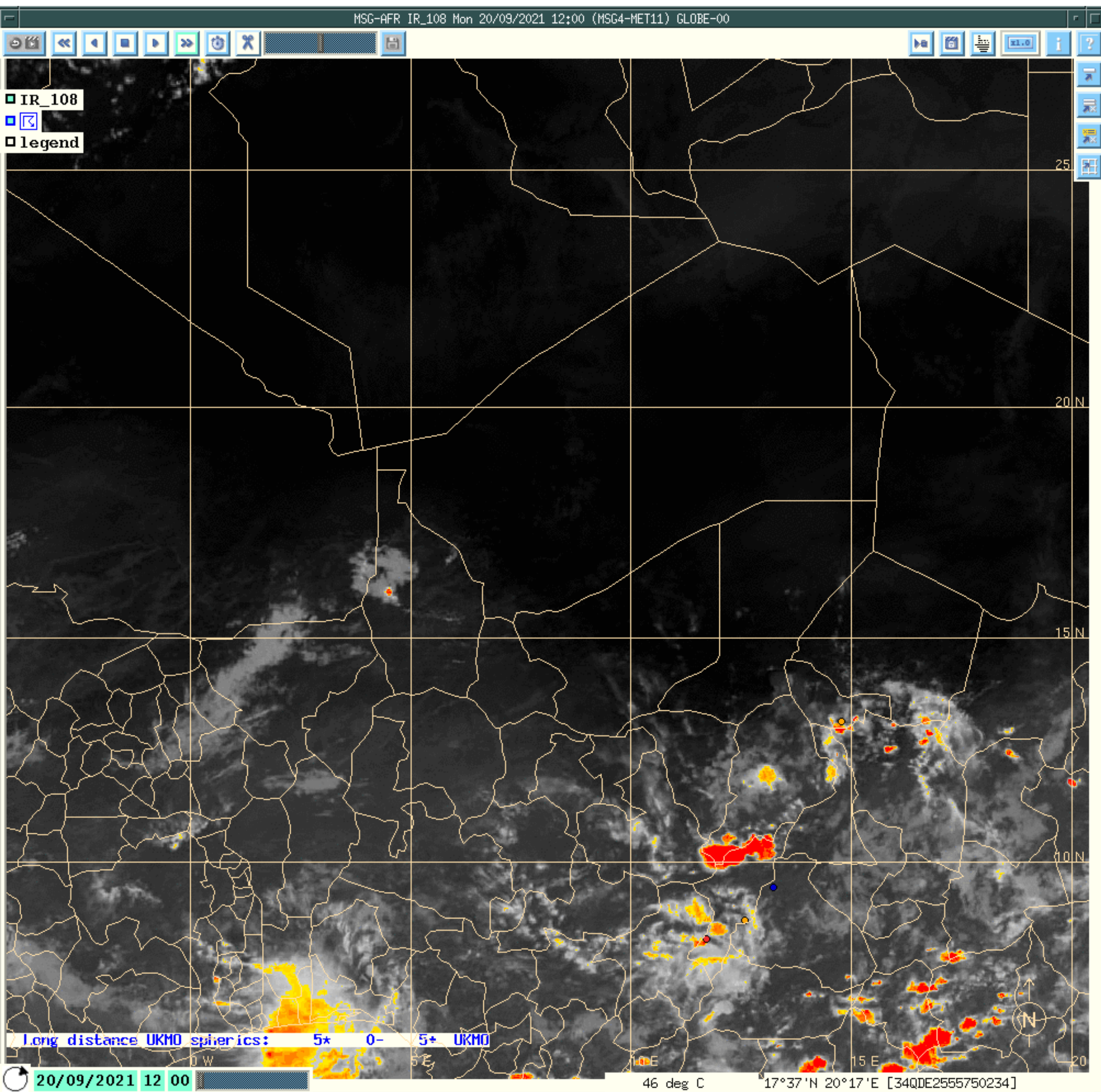
[http://154.66.220.45:8080/thredds/fileServer/ACMAD/WWFD/verification/service/OBS/ARCHIVE/RR24\\_20210920.html](http://154.66.220.45:8080/thredds/fileServer/ACMAD/WWFD/verification/service/OBS/ARCHIVE/RR24_20210920.html)

2021 09 20 24H rain gauge observation





09202021 12 to 09212021 00UTC



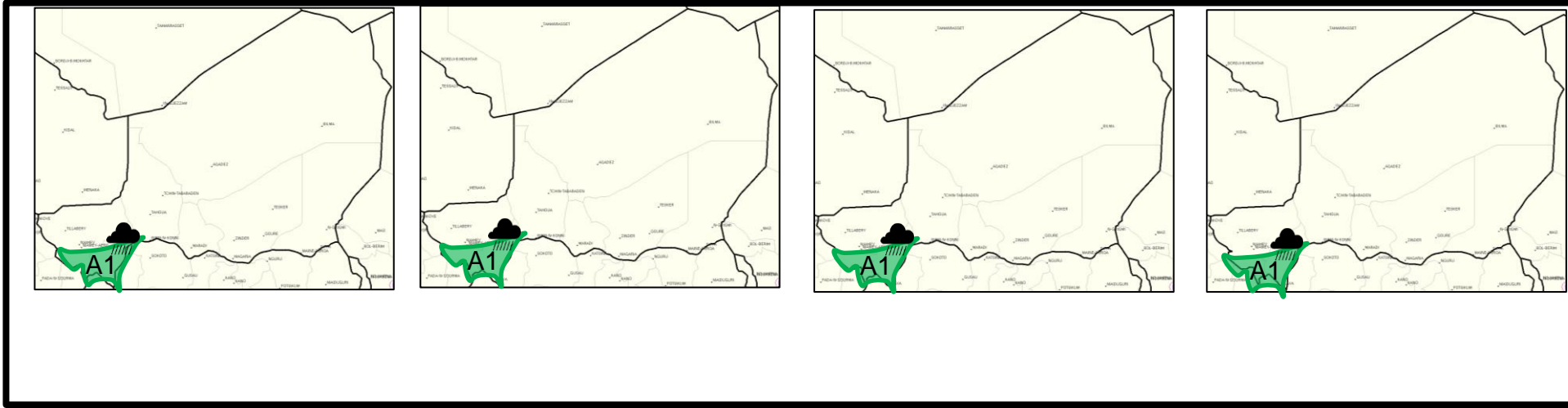


15 UTC

18 UTC

21 UTC

00 UTC



Region
Niger
Date
2021 09 21
Time
1200 + 24 hrs
Data
SEVIRI 10.8 $\mu$ m NWCSAF - CRR NWCSAF - RDT
Forecast Risk
Be aware
Be Prepared
Take Action

Weather Forecasting Risk Table

Likelihood	Very high	E1	E2	E3	E4	E5
	High	D1	D2	D3	D4	D5
	Medium	C1	C2	C3	C4	C5
	Low	B1	B2	B3	B4	B5
	Very low	A1	A2	A3	A4	A5
		Very low	Low	Medium	High	Very High
		Impact				

Take Action
Be Prepared
Be aware
Low risk

Weather Icons

Rain

Wind

Dust

Hail

Which ensemble products have been used to determine the likelihood and forecast? ECWMF ☐ UKMO ☐ BOTH ☐

Regions	12-15hrs	15-18 hrs	18-21 hrs	21-24 hrs
Diffa	Partly cloudy	Partly cloudy	Partly cloudy	Partly cloudy
Zinder	Partly cloudy	Partly cloudy	Partly cloudy	Partly cloudy
Maradi	Partly cloudy	Partly cloudy	Partly cloudy	Partly cloudy
Tahoua	Partly cloudy	Partly cloudy	Partly cloudy	Partly cloudy
Agadez	Clear Sky	Clear Sky	Clear Sky	Clear Sky
Dosso	Partly cloudy	Slight rain	Slight rain	Slight rain
Niamey	Partly cloudy	Slight rain	Slight rain	Slight rain
Tillaberi	Partly cloudy	Slight rain	Slight rain	Slight rain

Summary of 12-24 hour forecast