

Dry Intrusion

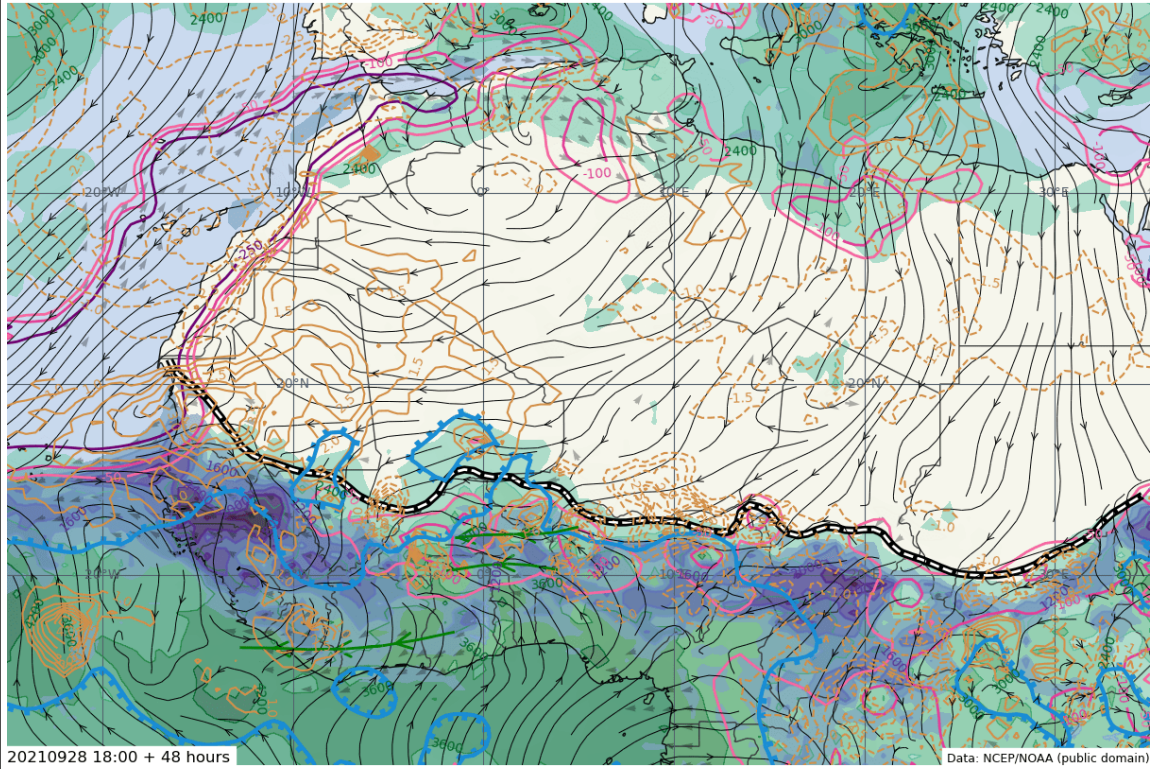
Increasing Pressure Tendency

decreasing Pressure Tendency

Wind Streamlines

Isobar

Region	24 hr Regional Synoptic Summary
Africa	<p>Azores high is expected to remain quasi-stationary (1028hPa), extending ridge over Morocco and Algeria.</p> <p>St Helena high is expected to move eastwards to the tip of South Africa and maintain its intensity (1028hPa).</p> <p>Mascarene High is expected to remain quasi-stationary (1024hPa).</p> <p>The relative Libyan ridge is maintained over northern Sahel.</p> <p>The ITD position will generally shift northwards.</p> <p>Deep moisture depth from 2400m over Sahel region to 4200m over the coastal areas.</p> <p>Deep convections are expected over the coast of the Gulf of Guinea countries, including Central and East Africa.</p>
Date	
2021 09 28	
Forecast Time	
0018 + 18 hrs	
Data	
GFS synthetic analysis chart	



STJ

TEJ

AEJ

ITD

Monsoon trough

Monsoon ridge

Region	24-72 hr Regional Synoptic Summary
West Africa	<p>Azores high is expected to remain Quasi-stationary (1028hPa).</p> <p>St Helena high is expected to slightly shift eastwards while intensifying from 1028hPa to 1032hPa, this will allow the dominance of monsoon flow over the Gulf of Guinea countries and Central Africa.</p> <p>Mascarene high is expected to remain quasi-stationary with 1024hPa at its center.</p> <p>Libyan ridge will remain intense over eastern and central Sahel region and the ITD will generally move southwards especially over the eastern part of Sahel. Dry intrusion is observed over Southern Mali and CAR.</p> <p>Monsoon influx is expected to be observed up to 15°N between 2400m over Sahel and 4200m near the coastal area.</p> <p>AEJ is expected to occur over Cape Verde, Senegal, Mauritania, Guinea, Mali, Burkina Faso, southwestern Niger and northern Benin.</p> <p>AEW will be present over Mauritania and Nigeria/Benin/Togo/Ghana. This will be associated with a vorticity over Burkina Faso</p>
Date	
2021 09 28	
Forecast Time	
0018 +48 hours	
Data	
GFS synthetic analysis chart	





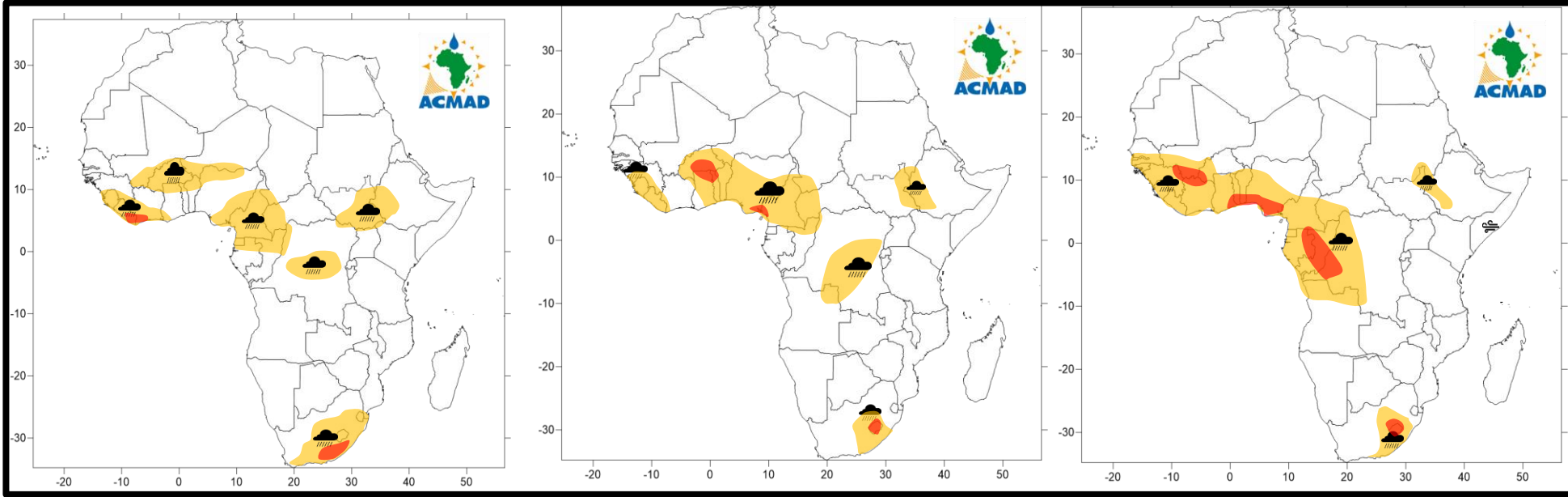
High impact weather Forecast sheet - Africa

2021 09 29 1200 UTC

2021 -09-29

2021-09-30

2021-10-01



Region
Africa
Date
2021 09 29
Time
29-30/09 & 01/10
Data
NCEP-NOAA/SWIFT, ECMWF, ARP-PUMA
Forecast Risk
Be aware
Be Prepared
Take Action

Weather Forecasting Risk Table

Likelihood ↑	Very high	E1	E2	E3	E4	E5
	High	D1	D2	D3	D4	D5
	Medium	C1	C2	C3	C4	C5
	Low	B1	B2	B3	B4	B5
	Very low	A1	A2	A3	A4	A5
		Very low	Low	Medium	High	Very High
Impact →						

Take Action
Be Prepared
Be aware
Low risk

Weather Icons			
Rain	Wind	Dust	Hail

Which ensemble products have been used to determine the likelihood and forecast? ECWMF ☐ UKMO ☐ BOTH ☒

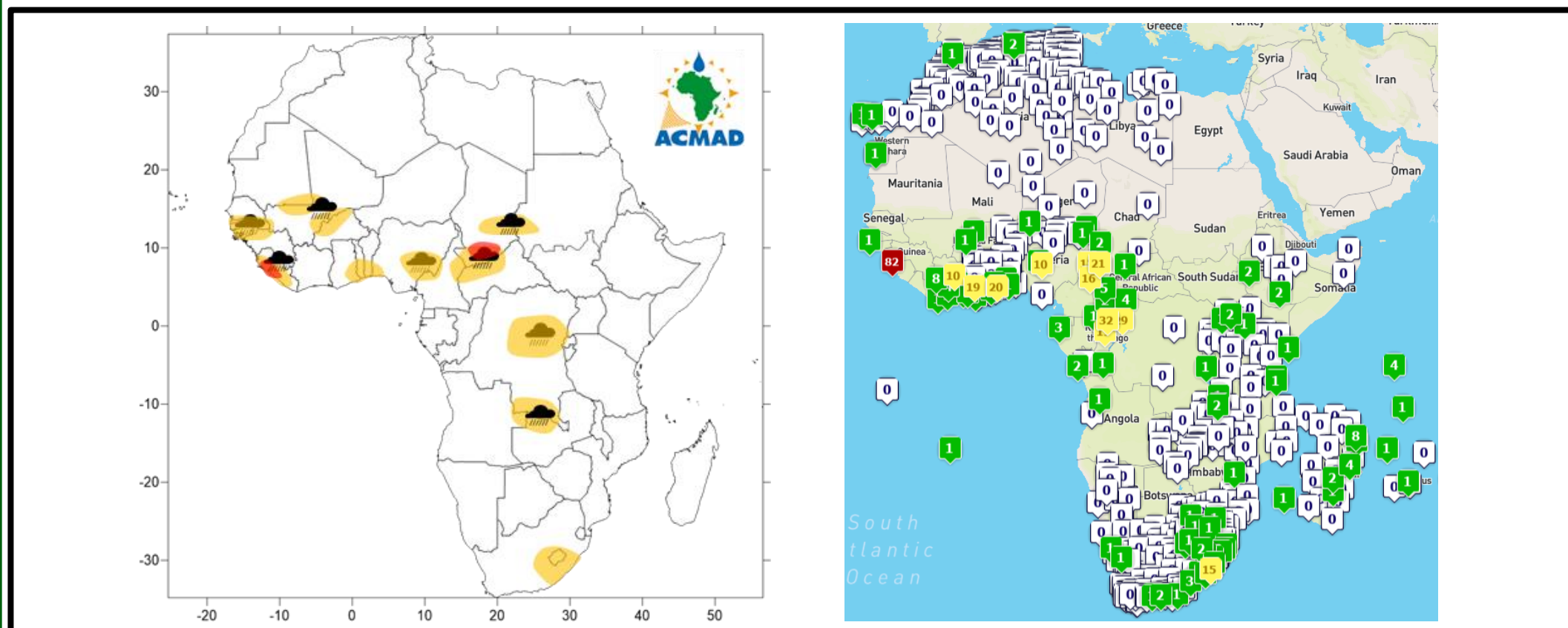
Regions	12-15hrs	15-18 hrs	18-21 hrs	21-24 hrs
Diffa				
Zinder				
Maradi				
Tahoua				
Dosso Niamey Tillaberi				

Summary of 12-24 hour forecast



Forecast issued on 2021 09 27 for 2021 09 28

2021 09 28 24H rain gauge observation



Data: Reports from GTS on 2021 09 29 at 06UTC

http://154.66.220.45:8080/thredds/fileServer/ACMAD/WWFD/verification/OBS/ARCHIVE/RR24_20210928.html

2021 09 28 24H rain gauge observation

