Dry
IntrusionIncreasing
Pressure
Tendencydecreasing
Pressure
TendencyWind
Streamlines

Isobar

Region

Africa

Date

2021 10 07

Forecast Time

0000 + 12 hrs

Data

GFS synthetic
analysis chart

24 hr Regional Synoptic Summary

Azores high is expected to move eastwards, while intensifying (from 1021hPa to 1027hPa) and extending a ridge over Morocco and Algeria.

St Helena high is expected to move eastwards, maintain its mean value 1019hPa, and extend a ridge over South Africa.

Mascarenes high is expected to move eastwards while intensifying (1024hPa to 1026hPa).

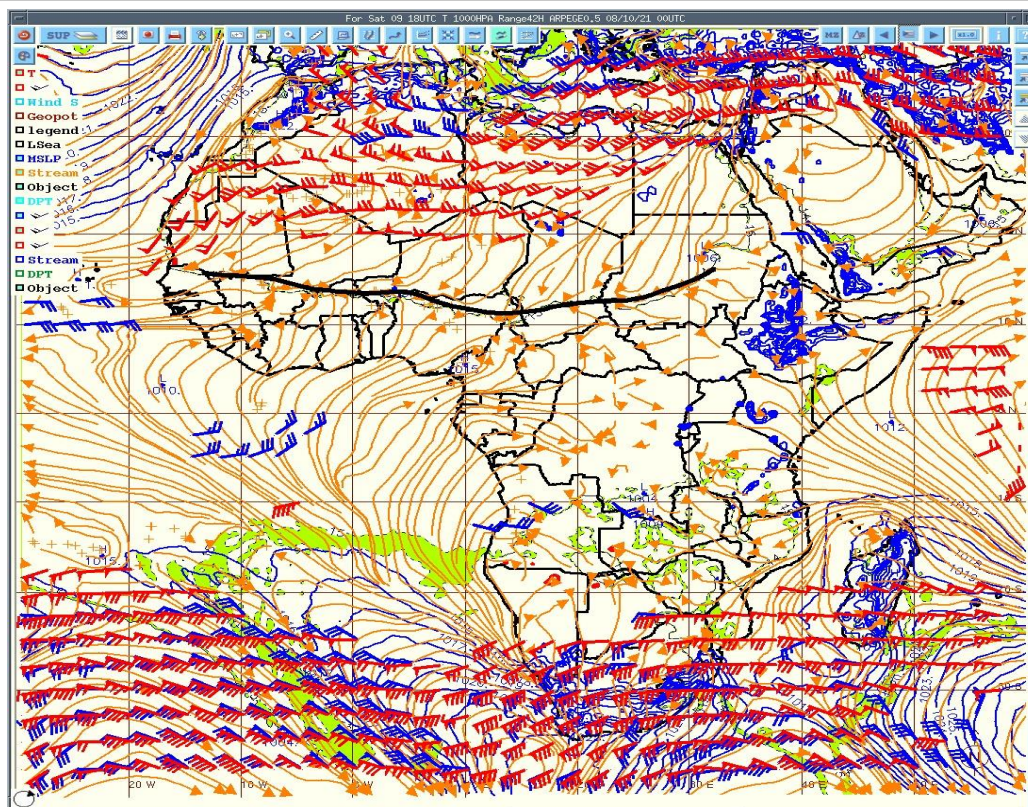
The relative Libyan High extends ridge over eastern and central Sahel.

ITD is expected to remain quasi-stationary.

The monsoon flow penetration will be up to 15°N over the western parts of Sahel and up to 12°N, and 10°N over the eastern region.

Dry air is expected southern Mali, Guinea, northern Nigeria and southern Chad.

AEJ are expected to occur Guinea; Liberia and Sierra Leone.



STJ



TEJ



AEJ



ITD

Monsoon
troughMonsoon
ridge

Region

West Africa

Date

2021 10 08

Forecast Time

0000 + 39 hours

Data

GFS synthetic
analysis chart

24-72 hr Regional Synoptic Summary

Azores high will move eastwards while intensifying from 1029hPa to 1035hPa and maintaining its ridge over Morocco and Algeria.

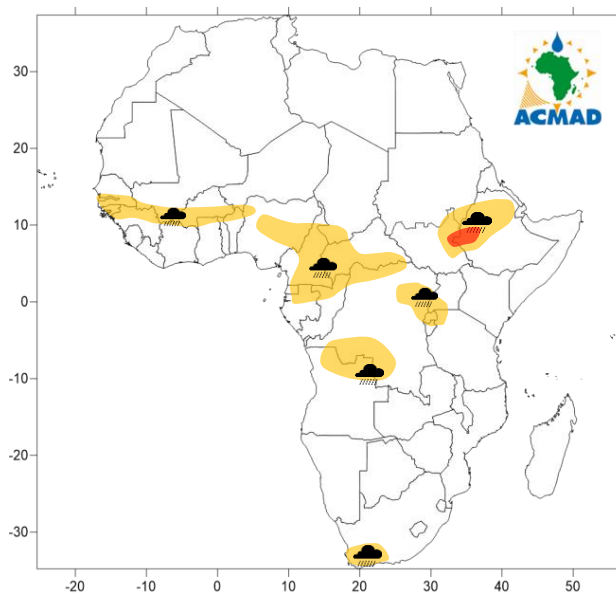
St-Helena high will intensify from 1022hPa to 1027hPa and then weak from 1030hPa to 1019hPa while maintaining its position and its ridge over South Africa.

Mascarene will move eastwards while weakening from 1026hPa to 1020hPa.

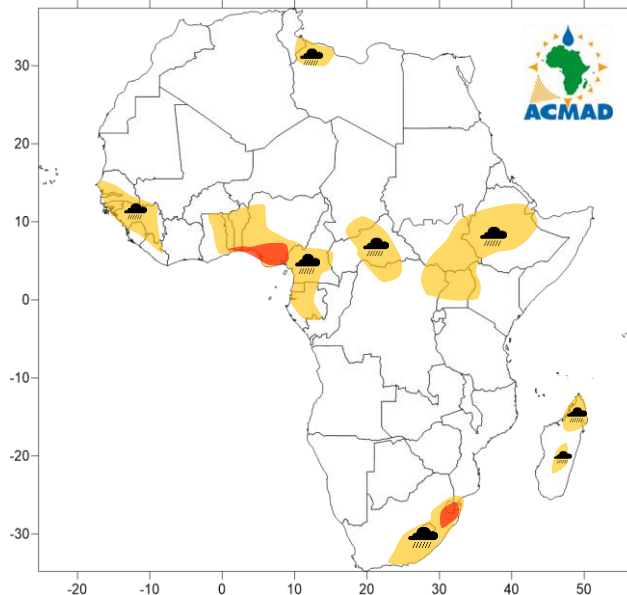
ITD will generally remain quasi-stationary. Monsoon flux penetration will be up to 16°N over Senegal and southern Mali, and up to 13°N elsewhere.

Dry air intrusion will remain over Nigeria/Cameroon/CAR, Mali, Guinea, Guinea Bissau, Gambia and Senegal. The convection will be confined over East and Central Africa where it's intense.

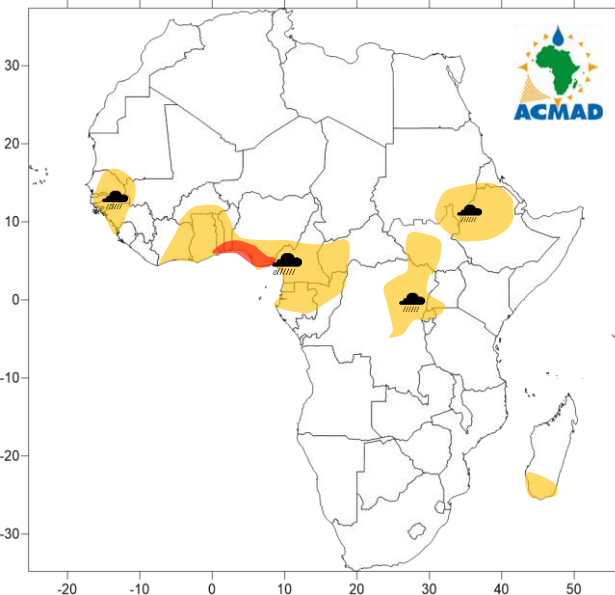
2021 -10-08



2021-10-09



2021-10-10



Region

Africa

Date

2021 10 08

Time

08-10/10/2021

Data

NCEP-NOAA/SWIFT,
ECMWF, ARP-PUMA

Forecast Risk

Be aware

Be Prepared

Take Action

Weather Forecasting Risk Table

Likelihood	Very high	E1	E2	E3	E4	E5
	High	D1	D2	D3	D4	D5
	Medium	C1	C2	C3	C4	C5
	Low	B1	B2	B3	B4	B5
	Very low	A1	A2	A3	A4	A5
		Very low	Low	Medium	High	Very High
		Impact				

Take Action

Be Prepared

Be aware

Low risk

Weather Icons



Rain



Wind



Dust



Hail

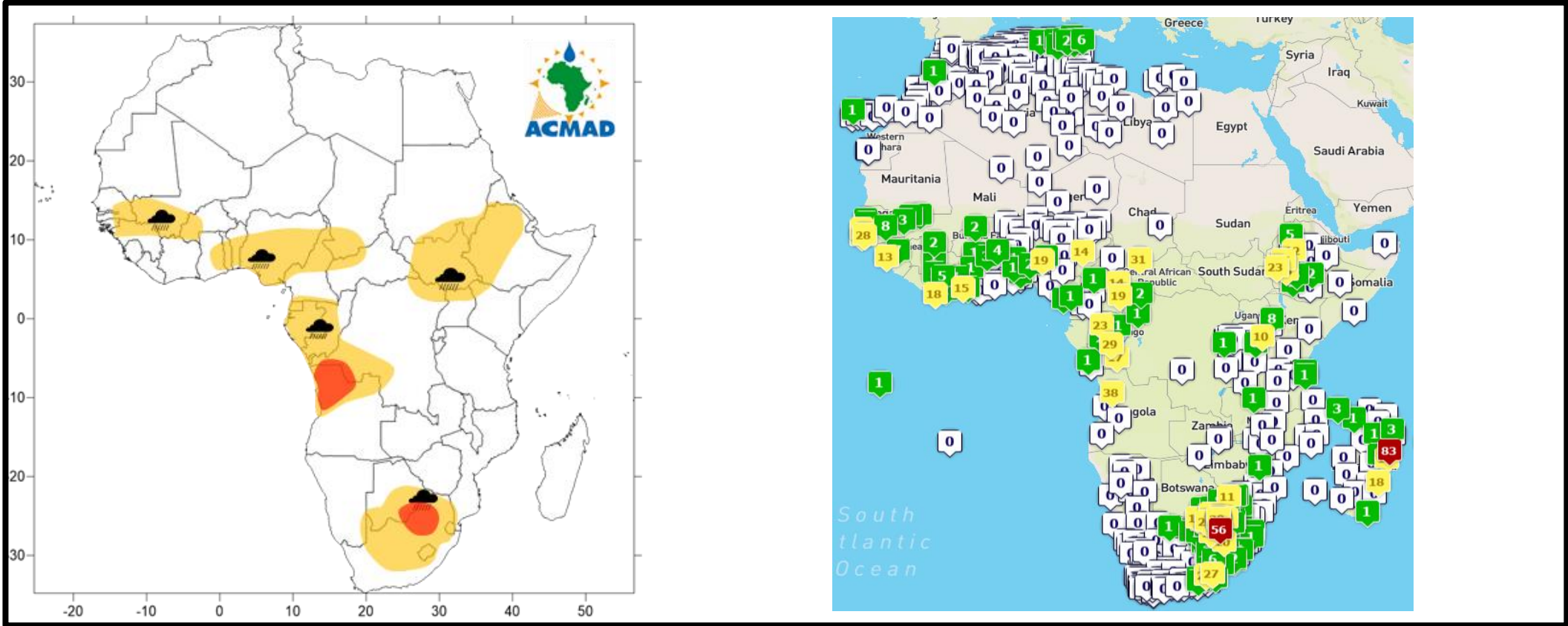


High impact weather Forecast verification

VT: 2021 10 07

Forecast issued on 2021 10 07 for 2021 10 07

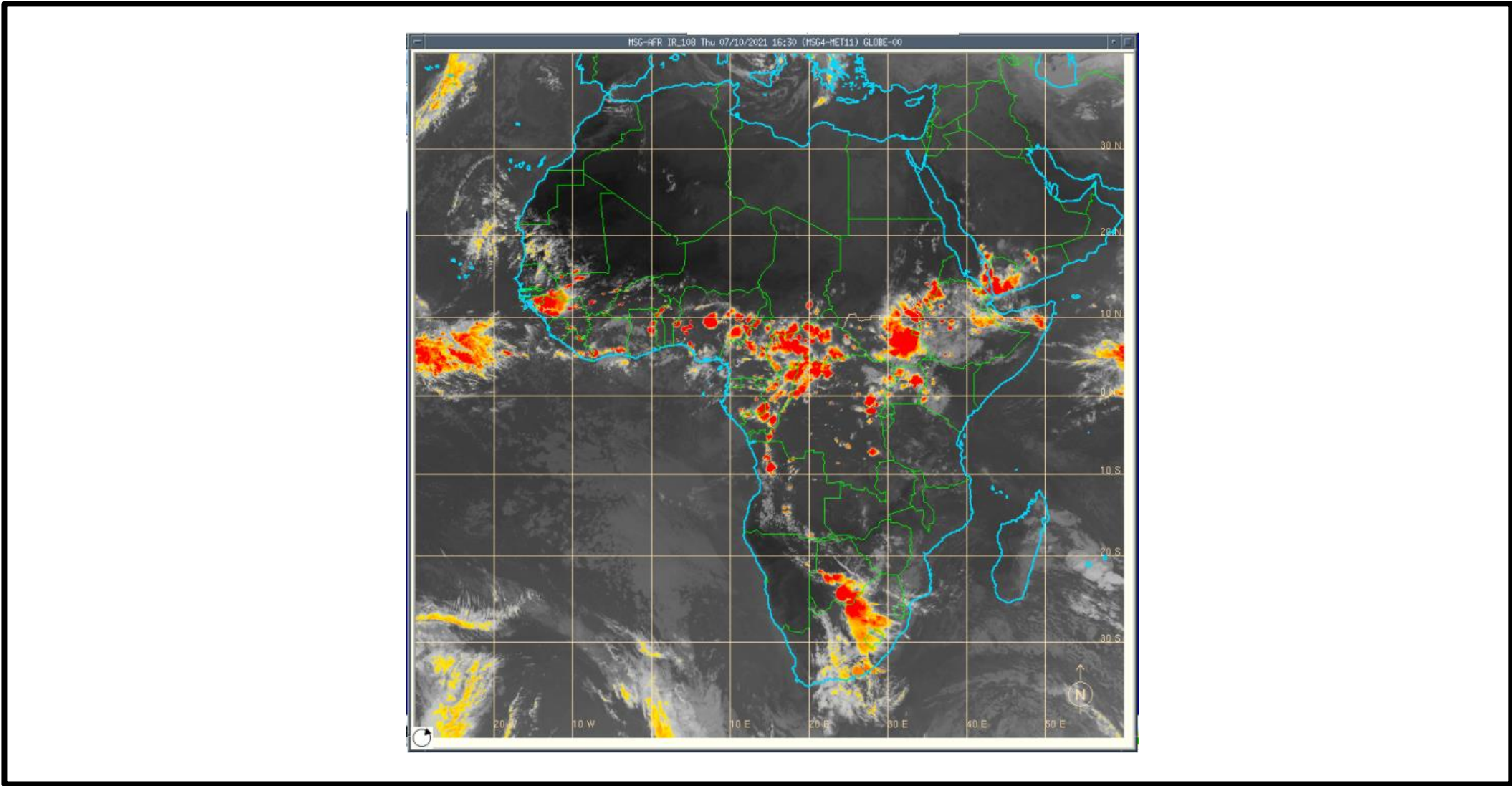
2021 10 07 24H rain gauge observation



Data: Reports from GTS on 2021 10 08 at 06UTC

http://154.66.220.45:8080/thredds/fileServer/ACMAD/WWFD/verification/OBS/ARCHIVE/RR24_20211007.html

MSG-AFR IR_108 on 07/10/2021 at 15:00 UTC



Contributors:

	TCHOUANWO Augustin	Resource Person	
	Frank RUSANGANWA	Secondment	
	Garba Adamou	Resource Person	
	Leon Guy Razafindrakoto	Thematic expert in meteorology	