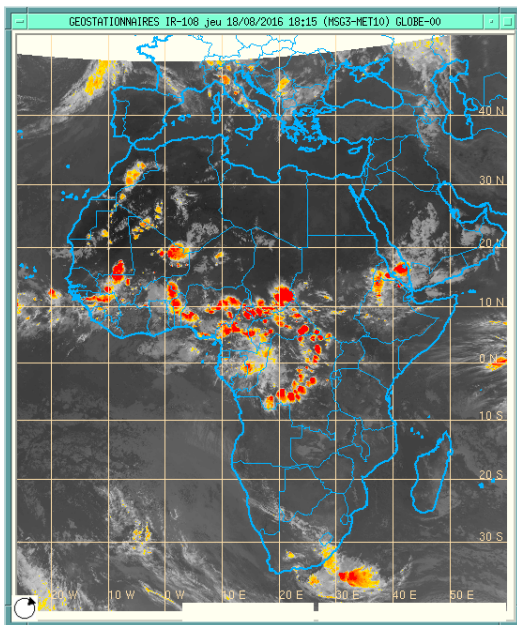


Heavy rains/Flash Flood Risk bulletin: PSN06-815

Issued: August, 19th Valid from: 20th to 22th August 2016

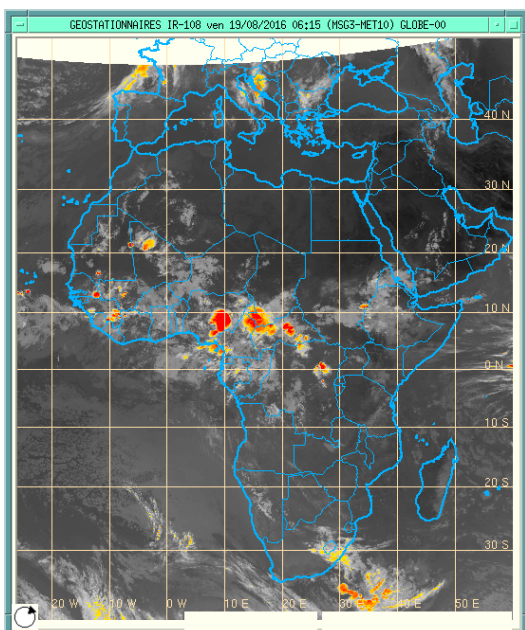
1. Observed weather: Highlight



Infra-red Image of 18th August 2016 at 18:15 UTC

Afternoon of 18th August, (Upper image):

It is observed active rainfall areas over the northern Mali and southern Mauritania, these heavy rains are related to the intrusion of monsoon north of 20°N latitude in this region. Elsewhere, rainfall activities are gradually moving southward, they are observed in Benin, central Nigeria, central Cameroon, CAR, north Congo and north/central DRC.



Infra-red Image of 19th August 2016 at 06:15 UTC

In the morning of 19th August,(Bottom image):

Most of rainfall activities which were observed on the evening of 18/08/2016 (over southern Mauritania, northern Mali and DRC) have dissipated overnight. Systems associated with heavy rains are developing this morning over the central Nigeria and north Cameroon/south Chad/.

Rainfall amount at some meteorological stations for the last 72 hours (in millimeters)

Date	Station Country (RainfallAmount)	Station Country (RainfallAmount)	Station Country (RainfallAmount)	Station Country (RainfallAmount)
18 August	Moundou Chad (88)	Impfondo Congo (64)	Sonoti Uganda (54)	Nara Mali (44)
17 August	Dakar Senegal (60)	Tidjikja Mauritania (48)	Diffa Niger (53)	Odienne Cote d'Ivoire (34)
16 August	Conakry Guinea (80)	Abuja Nigeria (62)	Po Burkina Faso (56)	Odienne Cote d'Ivoire 34

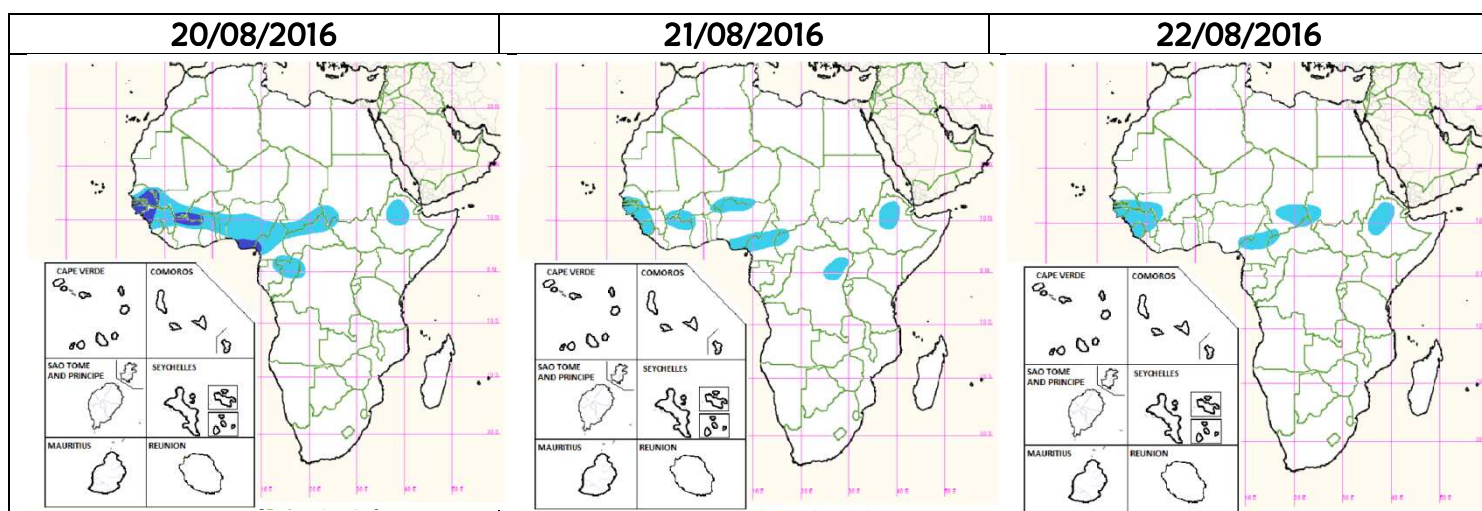
1. HEAVY RAINS/FLASH FLOOD RISK FORECAST VALID FOR THE NEXT THREE (03) DAYS.

High risk: NIL.

Medium risks are expected over: south Senegal, Gambia, Guinea Bissau, west Guinea, west Burkina Faso, north Cote d'Ivoire and southern Nigeria.

Low risk: east Guinea, west Mali, south Niger, central/east Nigeria, central/west Cameroun, north Congo, north CAR, south/east Chad, northeast DRC and northwestern Ethiopia.

Color	Severity of risk
	Low
	Medium
	High



Our flood risk forecast concerns only rainfed floods that could be caused by heavy rains.

Source: Synthesis of:

1) Dynamic of atmosphere by different global models (ECMWF, GFS, ARPEGE, UKMO).

2) Index of extreme events from ECMWF (http://www.ecmwf.int/products/forecasts/d/charts/medium/eps/efi/efi_tp/).

3) Occurrence probability of extreme precipitation from TIGGE project ensemble models (http://tparc.mri-jma.go.jp/TIGGE/tiqqe_extreme_prob.html), probability exceeding the 90th percentile [%]

4) MJO active phase.

For more and detailed information, please visit our website: <http://www.acmad.org> and watch for the next issue of this bulletin.

You may call Office: +227 20 73 49 92 or Head of Forecast: Léon Guy Razafindrakoto : +227 90 23 67 33