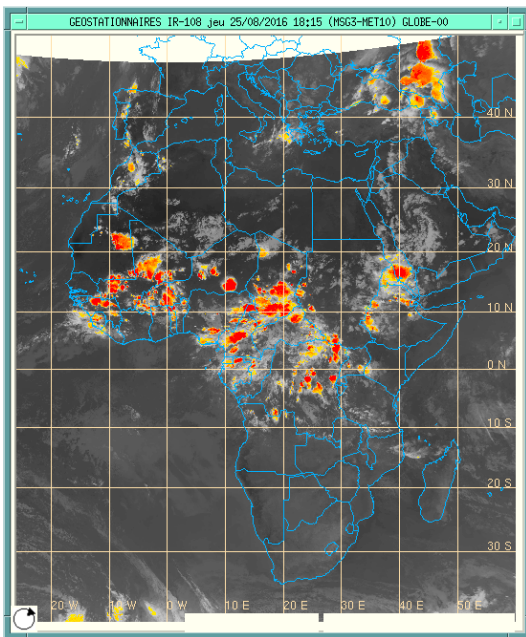


## Heavy rains/Flash Flood Risk bulletin: PSN06-817

Issued: August, 26<sup>th</sup> Valid from: 27<sup>th</sup> to 29<sup>th</sup> August 2016

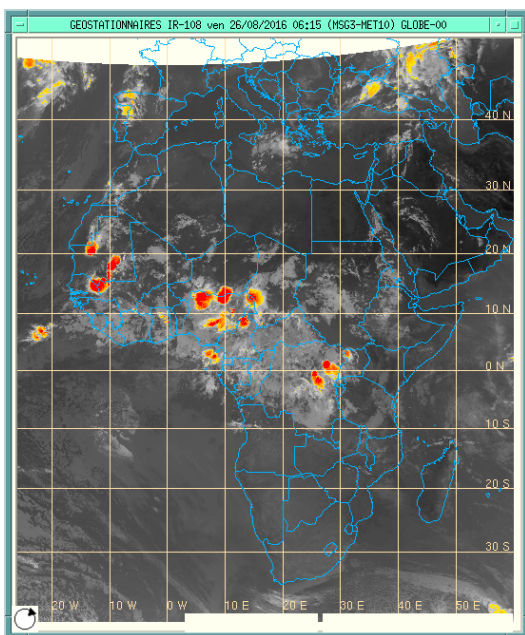
### 1. Observed weather: Highlight



Infra-red Image of 25<sup>th</sup> August 2016 at 18:15 UTC

#### Afternoon of 25<sup>th</sup> August, (Upper image):

Two easterly waves associated with heavy rainfall activities are observed, the first is over Chad, Cameroon, Niger, Nigeria and the second is over Mali and Burkina Faso. There are also isolated rainfall activities over northern Mauritania, DRC and western Ethiopia.



Infra-red Image of 26<sup>th</sup> August 2016 at 06:15 UTC

#### In the morning of 26<sup>th</sup> August,(Bottom image):

The easterly waves with rainfall activities which has been observed on the afternoon of 25/08/2016 are persisting and moving gradually westward. They are observed on the morning of 26/08/2016 over south Niger and central/north Nigeria and south Mauritania/west Mali/Senegal. Elsewhere, there is a dissipation of rainfall activities during the night except over northwest Mauritania and eastern DRC.

## Rainfall amount at some meteorological stations for the last 72 hours (in millimeters)

Date	Station Country <b>(RainfallAmount)</b>	Station Country <b>(RainfallAmount)</b>	Station Country <b>(RainfallAmount)</b>	Station Country <b>(RainfallAmount)</b>
25 August	Bata Equatorial Guinea <b>(109)</b>	Fada N’Gourma Burkina Fasso <b>(73)</b>	Yendi Ghana <b>(38)</b>	Gulu Uganda <b>(37)</b>
24 August	Odienne Côte d’Ivoire <b>(78)</b>	Sokode Togo <b>(32)</b>	Magaria Niger <b>(29)</b>	Kano Nigeria <b>(20)</b>
23 August	Douala Cameroon <b>(59)</b>	Sikasso Mali <b>(54)</b>	Bokoro Chad <b>(39)</b>	Berberati Centrafrique <b>(27)</b>

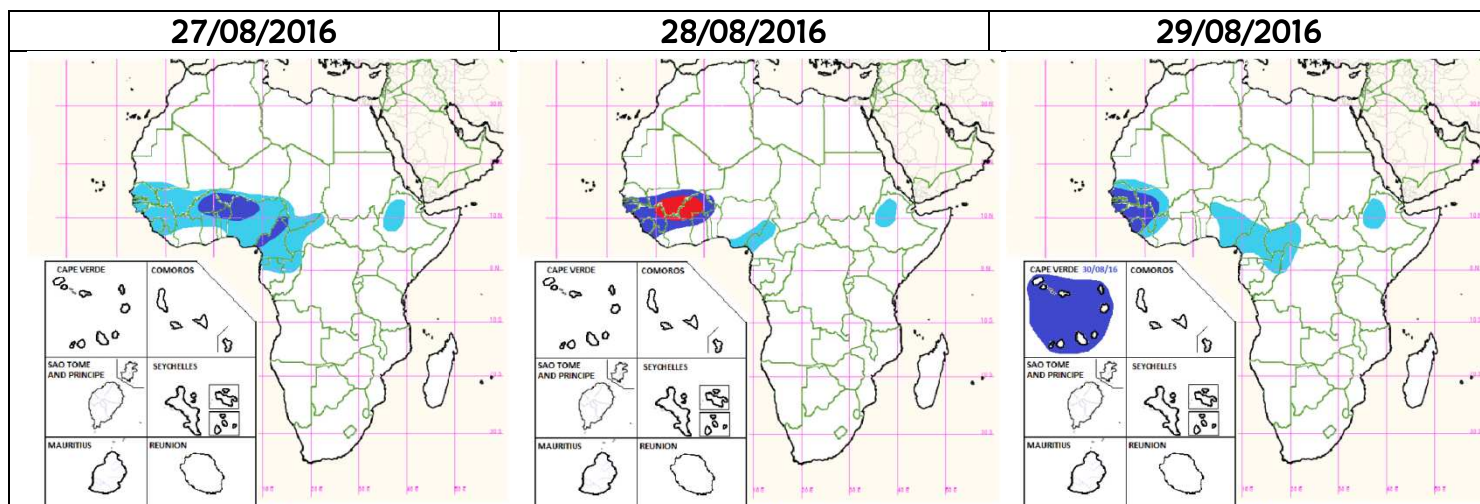
### 1. HEAVY RAINS/FLASH FLOOD RISK FORECAST VALID FOR THE NEXT THREE (03) DAYS.

**High risks:** are expected over Burkina Faso and south Mali.

**Medium risks:** south Senegal, Gambia, Guinea Bissau, Guinea, Sierra Leone, north Ghana/Togo/Benin, west Niger, northwest Nigeria and west Cameroon. (Cape Verde on 30/08/2016)

**Low risks:** centre/south Nigeria, centre/south Cameroon, south Chad, west CAR and northwestern Ethiopia.

Color	Severity of risk
	Low
	Medium
	High



Our flood risk forecast concerns only rainfed floods that could be caused by heavy rains.

Source: *Synthesis of:*

1) *Dynamic of atmosphere by different global models (ECMWF, GFS, ARPEGE, UKMO),*

2) *Index of extreme events from ECMWF ([http://www.ecmwf.int/products/forecasts/d/charts/medium/eps/efi/efi\\_tp/](http://www.ecmwf.int/products/forecasts/d/charts/medium/eps/efi/efi_tp/)),*

3) *Occurrence probability of extreme precipitation from TIGGE project ensemble models ([http://tparc.mri-jma.go.jp/TIGGE/tigge\\_extreme\\_prob.html](http://tparc.mri-jma.go.jp/TIGGE/tigge_extreme_prob.html)), probability exceeding the 90<sup>th</sup> percentile [%]*

4) *MJO active phase.*

For more and detailed information, please visit our website: <http://www.acmad.org> and watch for the next issue of this bulletin.

You may call Office: +227 20 73 49 92 or Head of Forecast: Léon Guy Razafindrakoto : +227 90 23 67 33