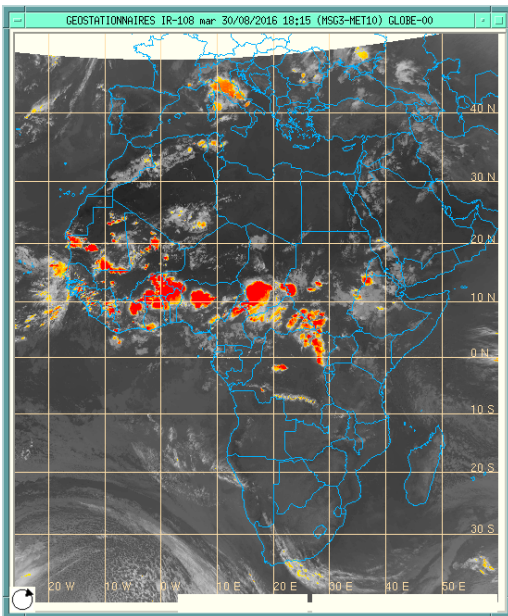


Heavy rains/Flash Flood Risk bulletin: PSN06-818

Issued: August, 31th Valid from: 01st to 03rd September 2016

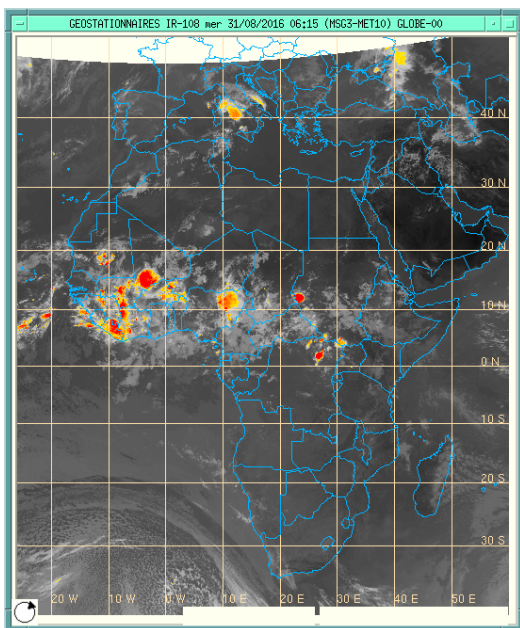
1. Observed weather: Highlight



Infra-red Image of 30th August 2016 at 18:15 UTC

Afternoon of 30th August, (Upper image):

A monsoon intrusion has resulted in heavy rains over southern Mauritania and northern Mali. Heavy rainfall activities are observed around latitude 10°N over north Cote d'Ivoire, Ghana, Benin, Togo, Burkina Faso and northern Nigeria, they are linked to air masses flow convergence on these regions. The effect of the Inter-tropical discontinuity fluctuation toward the south generates heavy rains over southern Chad, Sudan and South Sudan.



Infra-red Image of 31st August 2016 at 06:15 UTC

In the morning of 31st August,(Bottom image):

The rainy systems over Mauritania have tended to dissipate overnight while they are intensifying over Mali. Elsewhere, rainy cells generally spread westward by diminishing in intensity due to the nighttime effect.

Rainfall amount at some meteorological stations for the last 72 hours (in millimeters)

Date	Station Country (RainfallAmount)	Station Country (RainfallAmount)	Station Country (RainfallAmount)	Station Country (RainfallAmount)
30 August	Lekmte Ethiopia (66)	Segou Mali (62)	Kinshasa DRC (58)	Lagos Nigeria (42)
29 August	Ziguinchor Senegal (78)	Ibadan Nigeria (51)	Kayes Mali (51)	Impfondo Congo (40)
28 August	Axim Ghana (52)	Conakry Guinea (49)	Dakar Senegal (42)	Garoua Cameroon (44)

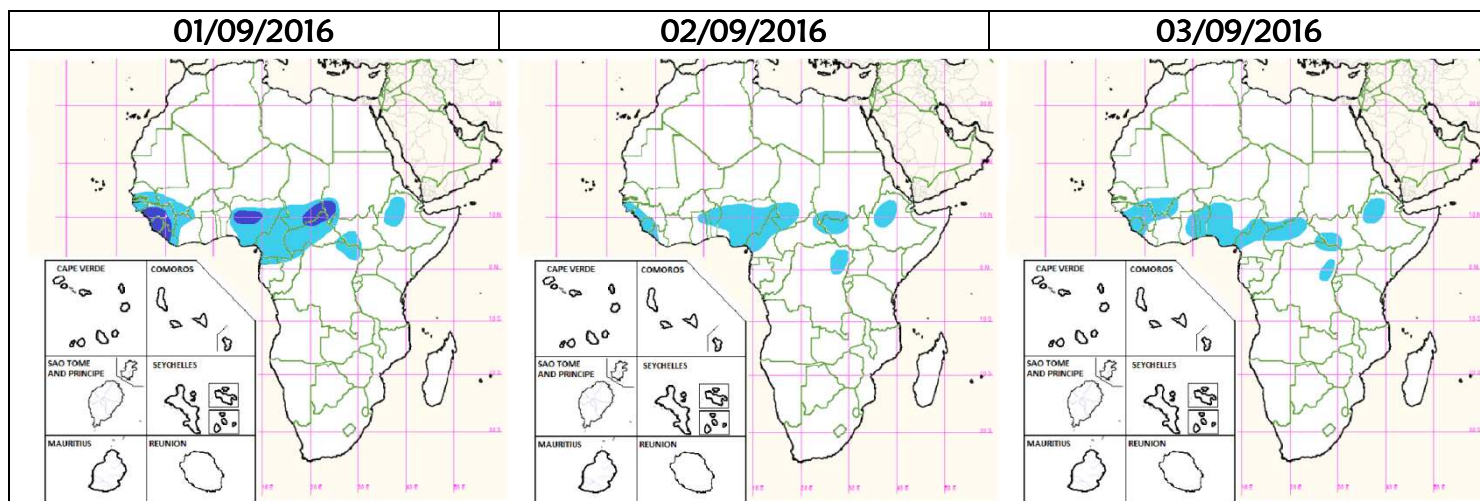
1. HEAVY RAINS/FLASH FLOOD RISK FORECAST VALID FOR THE NEXT THREE (03) DAYS.

High risk : Nil.

Medium risk: Guinea, Sierra Leone, west Liberia, centre Nigeria, southeast Chad, north CAR and western Sudan

Low risk: south Senegal, Gambia, Guinea Bissau, south Mali, west Cote d'Ivoire, south/east Nigeria, Cameroon, South Sudan ; northeast DRC and northwestern Ethiopia.

Color	Severity of risk
	Low
	Medium
	High



Our flood risk forecast concerns only rainfed floods that could be caused by heavy rains.

Source: Synthesis of:

1) Dynamic of atmosphere by different global models (ECMWF, GFS, ARPEGE, UKMO).

2) Index of extreme events from ECMWF (http://www.ecmwf.int/products/forecasts/d/charts/medium/eps/efi/efi_tp/).

3) Occurrence probability of extreme precipitation from TIGGE project ensemble models (http://tparc.mri-jma.go.jp/TIGGE/tiqq_extreme_prob.html), probability exceeding the 90th percentile [%]

4) MJO active phase.

For more and detailed information, please visit our website: <http://www.acmad.org> and watch for the next issue of this bulletin.

You may call Office: +227 20 73 49 92 or Head of Forecast: Léon Guy Razafindrakoto : +227 90 23 67 33